

TEAC®

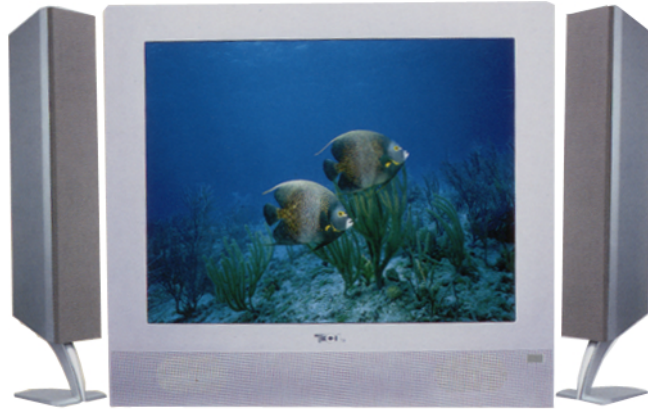
SERVICE MANUAL

CTF5151

51CM CTV

TEAC

SERVICE MANUAL



EC-21166

1. Caution.....	2
2. Specification.....	6
3. BOM List	9
4. Alignment Procedure.....	29
5. Block Diagram.....	36
6. Schematic Diagram.....	37
7. PCB Layout.....	38
8. Explode Diagram.....	39

This manual is the latest at the time of printing, and does not include the modification which may be made after the printing, by the constant improvement of product.

CAUTION:

Use of controls, adjustments or procedures other than those specified herein may result in hazardous radiation exposure.



CAUTION
RISK OF ELECTRIC SHOCK DO NOT OPEN.



CAUTION: TO REDUCE THE RISK OF ELECTRICAL SHOCK, DO NOT REMOVE COVER (OR BACK). NO USER SERVICEABLE PARTS INSIDE. REFER SERVICING TO QUALIFIED SERVICE PERSONNEL.



The lightning flash with arrowhead symbol, with an equilateral triangle is intended to alert the user to the presence of uninsulated “dangerous voltage” within the product’s enclosure that may be of sufficient magnitude to constitute a risk of electric shock to the person.



The exclamation point within an equilateral triangle is intended to alert the user to the presence of important operating and maintenance (servicing) instructions in the literature accompanying the appliance.

WARNING: TO REDUCE RISK OF FIRE OR ELECTRIC SHOCK, DO NOT EXPOSE THIS APPLIANCE TO RAIN OR MOISTURE.

IMPORTANT SAFETY INSTRUCTIONS

CAUTION:

Read all of these instructions. Save these instructions for later use. Follow all Warnings and Instructions marked on the audio equipment.

1. Read Instructions- All the safety and operating instructions should be read before the product is operated.
2. Retain Instructions- The safety and operating instructions should be retained for future reference.
3. Heed Warnings- All warnings on the product and in the operating instructions should be adhered to.
4. Follow Instructions- All operating and use instructions should be followed.

FOR YOUR PERSONAL SAFETY

1. When the power cord or plug is damaged or frayed, unplug this television set from the wall outlet and refer servicing to qualified service personnel.
2. Do not overload wall outlets and extension cords as this can result in fire or electric shock.
3. Do not allow anything to rest on or roll over the power cord, and do not place the TV where power cord is subject to traffic or abuse. This may result in a shock or fire hazard.
4. Do not attempt to service this television set yourself as opening or removing covers may expose you to dangerous voltage or other hazards. Refer all servicing to qualified service personnel.
5. Never push objects of any kind into this television set through cabinet slots as they may touch dangerous voltage points or short out parts that could result in a fire or electric shock. Never spill liquid of any kind on the television set.
6. If the television set has been dropped or the cabinet has been damaged, unplug this television set from the wall outlet and refer servicing to qualified service personnel.
7. If liquid has been spilled into the television set, unplug this television set from the wall outlet and refer servicing to qualified service personnel.
8. Do not subject your television set to impact of any kind. Be particularly careful not to damage the picture tube surface.
9. Unplug this television set from the wall outlet before cleaning. Do not use liquid cleaners or aerosol cleaners. Use a damp cloth for cleaning.
- 10.1. Do not place this television set on an unstable cart, stand, or table. The television set may fall, causing serious injury to a child or an adult, and serious damage to the appliance. Use only with a cart or stand recommended by the manufacturer, or sold with the television set. Wall or shelf mounting should follow the manufacturer's instructions, and should use a mounting kit approved by the manufacturer.
- 10.2. An appliance and cart combination should be moved with care. Quick stops, excessive force, and uneven surfaces may cause the appliance and cart combination to overturn.



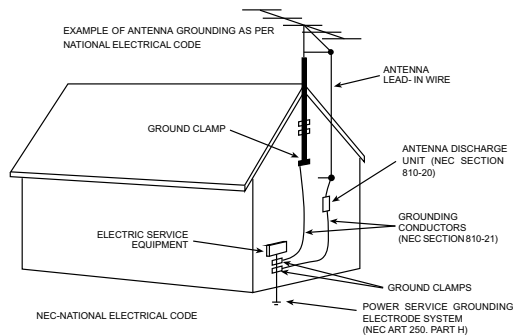
PROTECTION AND LOCATION OF YOUR SET

11.
 - Do not use this television set near water ... for example, near a bathtub, washbowl, kitchen sink, or laundry tub, in a wet basement, or near a swimming pool, etc.
 - Never expose the set to rain or water. If the set has been exposed to rain or water, unplug the set from the wall outlet and refer servicing to qualified service personnel.
12. Choose a place where light (artificial or sunlight) does not shine directly on the screen.
13. Avoid dusty places, since piling up of dust inside TV chassis may cause failure of the set when high humidity persists.
14. The set has slots, or openings in the cabinet for ventilation purposes, to provide reliable operation of the receiver, to protect it from overheating. These openings must not be blocked or covered.
 - Never cover the slots or openings with cloth or other material.
 - Never block the bottom ventilation slots of the set by placing it on a bed, sofa, rug, etc.
 - Never place the set near or over a radiator or heat register.
 - Never place the set in a "built-in" enclosure, unless proper ventilation is provided.

PROTECTION AND LOCATION OF YOUR SET

- 15.1. If an outside antenna is connected to the television set, be sure the antenna system is grounded so as to provide some protection against voltage surges and built up static charges, Section 810 of the National Electrical Code, NFPA No. 70-1975, provides information with respect to proper grounding of the mast and supporting structure, grounding of the lead-in wire to an antenna discharge unit, size of grounding conductors, location of antenna discharge unit, connection to grounding electrode, and requirements for the grounding electrode.

EXAMPLE OF ANTENNA GROUNDING AS PER NATIONAL ELECTRICAL CODE INSTRUCTIONS



- 15.2. Note to CATV system installer : (Only for the television set with CATV reception)

This reminder is provided to call the CATV system installer's attention to Article 820-40 of the NEC that provides guidelines for proper grounding and, in particular, specifies that the cable ground shall be connected to the grounding system of the building, as close to the point of cable entry as practical.

16. An outside antenna system should not be located in the vicinity of overhead power lines or other electric lights or power circuits, or where it can fall into such power lines or circuits. When installing an outside antenna system, extreme care should be taken to keep from touching such power lines or circuits as contact with them might be fatal.
17. For added protection for this television set during a lightning storm, or when it is left unattended and unused for long periods of time, unplug it from the wall outlet and disconnect the antenna. This will prevent damage due to lightning and power-line surges.

OPERATION OF YOUR SET

18. This television set should be operated only from the type of power source indicated on the marking label. If you are not sure of the type of power supply at your home, consult your television dealer or local power company. For television sets designed to operate from battery power, refer to the operating instructions.
19. If the television set does not operate normally by following the operating instructions, unplug this television set from the wall outlet and refer servicing to qualified service personnel. Adjust only those controls that are covered in the operating instructions as improper adjustment of other controls may result in damage and will often require extensive work by a qualified technician to restore the television set to normal operation.
20. When going on a holiday : If your television set is to remain unused for a period of time, for instance, when you go on a holiday, turn the television set " off " and unplug the television set from the wall outlet.

IF THE SET DOES NOT OPERATE PROPERLY

21. If you are unable to restore normal operation by following the detailed procedure in your operating instructions, do not attempt any further adjustment. Unplug the set and call your dealer or service technician.
22. Whenever the television set is damaged or fails, or a distinct change in performance indicates a need for service, unplug the set and have it checked by a professional service technician.
23. It is normal for some TV sets to make occasional snapping or popping sounds, particularly when being turned on or off. If the snapping or popping is continuous or frequent, unplug the set and consult your dealer or service technician.

FOR SERVICE AND MODIFICATION

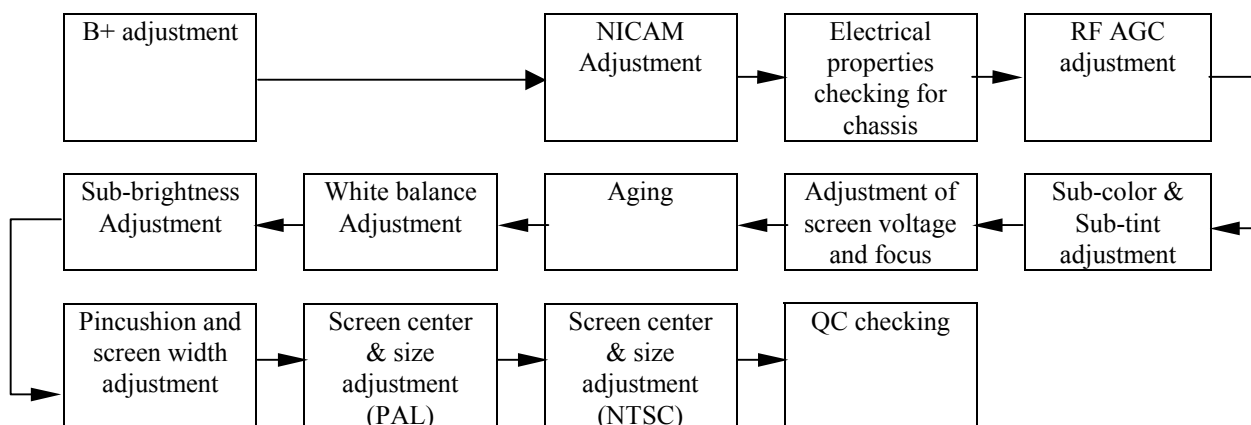
24. Do not use attachments not recommended by the television set manufacturer as they may cause hazards.
25. When replacement parts are required, be sure the service technician has used replacement parts specified by the manufacturer that have the same characteristics as the original part. Unauthorized substitutions may result in fire, electric shock, or other hazards.
26. Upon completion of any service or repairs to the television set, ask the service technician to perform routine safety checks to determine that the television is in safe operating condition.

PFS2 FORMAT-1 Report	
Date: 2003-9-16 15:12 ProductView.....: Report by.....:	Product: CT-M5110H
Specs / Products	
MasterData	
Customer Id	TEAC AUSTRALIA PTY LTD
Version	0.1
Status	New
Brand	TEAC
EAN	\
UPC	\
Reception	
+Tuning - presets/channels	100
+Tuning - technology	VST
+Tuning - Indication	X
+Freq Bands	UVSH
+Channels	100
+IF Freq	
+TV Systems Off Air	PAL B/G
+Add Systems Ext In	NTSC 3.58, NTSC 4.43, NTSC Play Back, PAL 60
+TV Systems Multi	PAL-Multi
+Sound Systems	AV Stereo
Picture - Processing	
+Scan	Standard
+Scan Modes	4:3
+Wide Screen Switching	
+Combfiler	
+Picture Control	Brightness, Colour, Contrast, Color Temperature, Hue, Sharpness Cont Var, Smart Pict. 4 Modes
+Pict Enhancement	Black Stretch
+Pict Noise Reduction	
Picture - Display	
+Display Type	DV - CRT - RF
+Screen Format	4:3
+Size(Visual)" - size/vis. cm	21"
+Deflection System (CRT only)	
+Tube Technology (CRT only)	Black Matrix, Iron
+CRT Defl	
+CRT Gun	Stand Gun
+CRT Magn field	Neutral
+Resolution	
+Coating (only for D.V. sets)	
+White Point	
Sound	
+RMS Power Intern	
+RMS Power Extern	
+Surround Sound	
+Sound Features	Mute
+Sound Control	Volume
Sound - Speakers	
+Speaker configuration	2
+Speakers used	Normal
+Speaker Size	
User Interface	
+Interface Name	L01- Full Interface
+Voice Control	
+Menu	Cursor Control
+Menu Colours	
+Menu Languages	English
+Special Features	No signal Auto Standby,Timer Power ON/OFF, Favorite Channel, Sleep timer, Game, Calendar, Notebook, Hotel lock , Auto Search
+Operational Features	
+PP Features	
+Tuning/Install Features	Auto Store, Factory Mode, Fine Tuning, Manual Search/Store, Manual Sort, Service Mode
+Clock/Timer Functions	Clock, On/off timer, Sleep timer

Date: 2003-9-16 15:12	
ProductView.....:	
Report by.....:	Product:
Specs / Products	CT-M5110H
+Local Controls Front	Channel +/-, Volume +/-, TV/AV,MENU, Power Switch,
+Local Controls Top	
+Indicators - screen	
+Indicators - front	RC Recvd LED, SB LED
+Numb of Loc Cont (incl Mains)	7
+Number of Ind. (incl Mains)	1
+Local Controls (Old)	
Remote Control	
Connectors Rear	
+Scart RGB+Y/C+CVBS	
+Scart RGB+CVBS	
+Scart CVBS+Y/C	
+Component In (Y/U/V) Cinch	
+In Y/C+Cinch(CVBS+St)	
+In Y/C+Cinch(CVBS+Mo)	
+In Y/C+Cinch(St)	
+In BNC (CVBS)	
+In Cinch(CVBS+St)	X
+In Cinch(CVBS+Mo)	
+Out Cinch(CVBS+St)	
+Out Cinch(CVBS+Mo)	X
+Out Cinch Audio Stereo	
+Out Cinch Audio Mono	
+Out Cinch Dolby Surround	
+Out Cinch Subwoofer	
+Dig Audio Out	
+Loudspeakers	
+Control Busses	
+Feature Slot	
+ITV Smart Port	
+Terr. Antenna in	75 Ohms (IEC type)
Guide + IR Blaster Jack	
Connectors Front	
+In Y/C + Cinch(CVBS+St)	
+In Y/C + Cinch Stereo	
+In Cinch (CVBS + St+ Mo)	
+In Cinch (CVBS+Mo)	
+Headphone Out	
+Feature Slot	
Connectors Side	
+In Y/C + Cinch(CVBS+St)	
+In Y/C + Cinch Stereo	
+In Cinch (CVBS + St+ Mo)	X
+IN Cinch (CVBS + Mo)	
+Headphone Out	
Connectors Top	
+In Cinch (CVBS + St)	
+Headphone Out	
Connectors Mechanical	
+Headphone	
+Cinch A/V in/out	
+Cinch Component	
+Cinch Y/C	
Styling	
+Cabinet Name	21166
+Configuration	
+Graphics/Logo's	
-Cabinet Colour and Finish	
Silver Frost	
+Mechanics	
+Speaker Visibility	Standard
General	
+Segment	Standard 4:3
+Chassis	M28
+Software Delivery Mode	
+Software Version	
+Mains Voltage	240V
+Mains Frequency	50Hz
+Type Mains Cord	
Power Consumption (P)TV in On	

Date: 2003-9-16 15:12	
ProductView.....:	
Report by.....:	Product:
Specs / Products	CT-M5110H
Power Consumption SB in Watts	Less then 3W
Power Consumption Semi SB in W	
+Power in "ON" for	
+Power in Standby for	
+Power in "OFF" for	
Weight (P)TV (incl. Packaging)	
Weight (P)TV (excl. Package)	
Weight AVUnit excl Packaging	
+INDICATION on BACKCOVER	
+Channel	
Final Equipment	
+Packaging - methods	
+Documents and manuals	
+Languages DFU	
+Cables Supplied	
+Antenna Supplied	
+Stand Supplied	
+Aux Equipm Supplied	
Packaging - width cm	
Packaging - height cm	
Packaging - depth cm	
Miscellaneous	
+EAN Indication	
+Approbation	
+Tests	
+Local Integration	
Various Perf. Param.	
+Service Call-Rate	
PIP/POP	
+Type	
+Features	No
Digital Reception	
+Transmission	
Built-in Data System	
+Text Standard	
+(Tele)text Features	No
+Nbr bckgrnd page / Mem Size	No
+Text Technology	No
+Digital Data handling	
+Program Guide	
Built-in Clock/Timer	
+Type	
+Features	
Built-in Radio	
+Type	
Built-in PC display	
+PC Synch	
+PC Control	
Built-in DVD drive	
+Type of Medium	
+Type of Deck	
+Version of Deck	
Phased Out Items	
+Tuner/Frontend	
+Sensitivity	
+CRT EHT	
+Lightning Protection	
+Account	
+XX(Radio Antenna in)	
+Non Volatile Memory	
+In Y/C + Cinch(CVBS+Mo)	
Version of deck	

Flowchart chart of alignment procedure for M28 chassis:



ALIGNMENT PROCEDURE FOR M28 CHASSIS:

I) Adjustment of B+ voltage

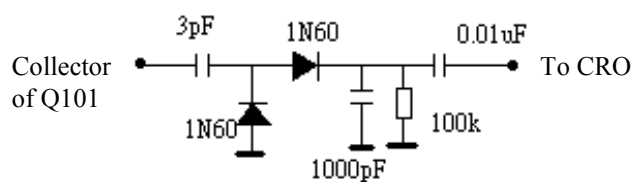
1. Apply 110-240VAC($\pm 5V$) to mains power input, and Philips standard testing pattern to RF input.
2. Adjust VR830 in STANDARD mode until voltage at TP2 (B+) is $112V \pm 0.5V$.

II) NICAM Adjustment (for NICAM model only)

1. Apply a 38.9MHz color bar with NICAM signal to the IF input.
2. Monitor the DC voltage at pin 15 of IC1101.
3. Adjust T1101 until the voltage at pin 15 of IC1101 becomes $2.5 \pm 0.1V$.
4. Then check the waveform at pin 4 and 6 of P1103 and it must show correct audio signal.

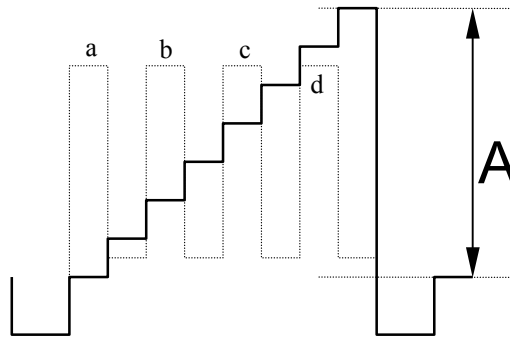
III) The alignment of RFAGC

1. Connect the detector shown below to collector of Q101.
2. Receive a grey scale signal with $70dB \mu V$ amplitude.
3. Adjust RFAGC item until the output of the detector becomes $0.8V_{pp}$



IV) Adjustment of Sub-contrast, Sub-tint and Sub-colour for NSTC and PAL signal.

1. Enter D-mode, and connect the probe of Oscilloscope to the conjunction between R201 and P201 (B-out).
2. Apply the Grey-scale/Colour-bar (NTSC signal) to the AV input, in STANDARD status.
3. Select CNTC to adjust the sub-contrast, until that the amplitude "A" is $2.5V_{p-p}$ as shown below.
4. Select COLC to adjust the sub-colour by tuning the amplitude of "a" and "d" to the same.
5. Select TNTC to adjust the sub-tint by tuning the amplitude of "b" and "c" to the same.
6. Apply the Grey-scale/Colour-bar (PAL signal) to the AV input, in STANDARD status.
7. Select COLP to adjust the sub-colour by tuning the amplitude of "a", "b", "c" and "d" to the same.



V) Adjustment of Focus, Screen Voltage and Sub-brightness

1. Receive a crosshatch pattern.
2. Adjust the "FOCUS" VR on the flyback the make the picture clear.
3. Enter D-mode and press "MUTE" key and the screen will become a horizontal line. Then adjust the "SCREEN" VR on the flyback transformer to set the intensity of the line to a minimum visible level (the line can just be seen).
4. Press "MUTE" key again and the TV will become full raster.
5. Select BRTC to adjust the sub-brightness, until that the 2nd dark bar of 8 level grey scales just can be seen.

VI) Adjustment of White balance

1. Receive a black and white pattern at STANDARD status.
2. Use a color analyzer to measure the black side of the screen. By changing the value of BB and GB, set the reading of the color analyzer to $x=284, y=299$.
3. Then measure the white side of the screen. By changing the value of BD and GD, set the reading of the color analyzer to $x=284, y=299$.
4. Repeat step 2&3 until you can get the correct reading for both black and white sides.

VII) Adjustment of Pincushion and Picture Width (for pure flat model only)

1. Receive a crosshatch pattern.
2. Adjust VR302 until the vertical line become straight.
3. Adjust VR303 for horizontal size.

VIII) Adjustment of Picture Geometry (PAL)

1. Apply the crosshatch pattern (PAL signal) to the RF input, in STANDARD status.
2. Select HPOS to adjust the Horizontal center.
3. Select VP50 to adjust the Vertical center.
4. Select HIT to adjust the Vertical amplitude.
5. Select VLIN to adjust the vertical linearity.
6. Select VSC to adjust the vertical S-correction.

IX) Adjustment of Picture Geometry (NTSC)

1. Apply the crosshatch pattern (NTSC signal) to the RF input, in STANDARD status.
2. Select HPS to adjust the Horizontal center.
3. Select VP60 to adjust the Vertical center.
4. Select HITS to adjust the Vertical amplitude.
5. Select VLIS to adjust the vertical linearity.
6. Select VSS to adjust the vertical S-correction.

X) Adjustment of OSD position

1. Enter D-mode and press key “1”, then choose OSDH(OSDHS) item and adjust the OSD vertical position 50HZ(60HZ).
2. Enter D-mode and press key “NOTE”, then choose the OSD1 item and adjust the OSD horizontal position(Volume bar,Picture bar,Half blue panel OSD).
3. Enter D-mode and press key “NOTE”, then choose the OSD2 item and adjust the OSD horizontal position except OSD1 item.

XI)D-mode:

1. press D-Mode ON/OFF key, and then you can enter the D-mode.
2. press VOLUME DOWN key on the unit until the volume decrease to minimum level, then press the DISPLAY key on the remote handset (don't release the volume key) and you can enter D- mode.

After enter D-mode you can adjust the setting according to the following procedure,

ITEM	Description	Initial
GROUP1	KEY 0	
RB	R CUT OFF	
GB	G CUT OFF	
BB	B CUT OFF	
GD	G DRIVE	
BD	B DRIVE	

GROUP2	KEY 1	
HPOS/	Horizontal Position 50HZ	
HPS	Horizontal Position 60HZ	
HIT/	Hight 50Hz	
HITS	hight 60 hz	
VP50	Vertical Position 50Hz	
VP60	Vertical Position 60HZ	
VLIN	V Linearity 50Hz	
VLIS	V Linearity 60hz	
VSC	VS Correction 50Hz	
VSS	VS Correction 60HZ	
VLK	V BLK Start / Stop	
VCEN	V CENTERING	
OSDH	OSD vertical position 50HZ	
OSDHS	OSD vertical position 60HZ	

GROUP 3	KEY 3	
CNTX	CONTRAST MAX.	
CNTN	CONTRAST MIN.	
BRTX	BRIGHT MAX.(difference from center)	
BRTN	BRIGHT MIN.(difference from center)	
COLX	COLOR MAX.(difference from center)	
COLN	COLOR MIN.	
TNTX	TINT MAX.(difference from center)	
TNTN	TINT MIN.(difference from center)	

GROUP 4	KEY 4	
BRTC	BRIGHT CENTER	
COLC	COLOR CENTER NTSC	
COLS	COLOR CENTER SECAM	
COLP	COLOR CENTER PAL(shift data from COLC)	
SCOL	SUB COLOR (Cr input (#21) gain up)	
SCNT	SUB CONTRAST	
CNTC	CONTRAST CENTER	
TNTC	TINT CENTER	

GROUP 5	KEY 5	
ST3	SHARP CENTER 3.58NTSC TV	
SV3	SHARP CENTER 3.58NTSC VIDEO	
ST4	SHARP CENTER OTHER TV	
SV4	SHARP CENTER OTHER VIDEO	
SVD	SHARP CENTER DVD	
ASSH	ASYMMETRY-SHARPNESS	
SHPX	SHARP MAX.(difference from center)	

SHPN	SHARP MIN.(difference from center)	
GROUP 6	KEY 6	
OPT	OPTION DATA	
	0 D mode key 0: No use 1 :use	
	1 0:normal 1: mute sound when no sync in TV	
	2 0:NORMAL 1: mute video during change channle	
	3 au gain 0:50khz 1: 25khz	
	4 when no sync 1: AFT 0: no AFT	
	5 AV change 1: mute 0: no mute sound	
	6 Korea PAL50 BLINK function 1:enable 0:disable	
	7 standby state 0: high standby 1: low standby	
FLG0		
	0 OVER MOD	
	1 N Buzz Cancel	
	2	
	3 SLO f0 shift	
	4 hotel mode TV mode enter	
	5 hotel mode av mode enter	
	6 hotel mode	
	7 vco readjust when position select 0:enable 1:disable	
FLG1		
	0 1: 7 key 0: 6 key	
	1 Secam 0:disable 1:enable	
	2 LOGO 0:disable 1:enable	
	3 TINT por	
	4 PIF SELECT 01:45.75 MHZ	
	5 011 :38.9MHZ	
	6 100 :38MHZ	
	7 APC 1:AUTO 0:PRESET	
STBY		
	0	
	1	
	2 hd kill timer set *40us	
	3	
	4 when STBY.5=0 ,after AC on 0: standby 1: power on	
	5 after AC power on, 0: ref STBY.4 1: last state	
	6 auto sleep function	
	7	
MODE0		
	0 NICAM 0:DISABLE 1:ENABLE	
	1 English language select	
	2 Russia language select	
	3 vietnam language select	
	4 mute type 0: y mute 1: RGB mute	
	5 when mode0.7 = 1 ; preset sound system after ASM	
	6 00: BG 01 :I 10:DK 11: M	
	7 preset sound system after ASM 0:disable 1:enable	
MODE1		
	0 BG system enable	
	1 I system enable	
	2 DK system enable	

	3	M system enable	
	4	VIDEO2 enable	
	5	video3 enable	
	6	YUV enable	
	7	Thailand Dual language 0:Disable 1:Enable	
MUTT		standby -->wake time	
STAT		contrast up timer afer standby off	

GROUP 7	KEY 7	
RF AGC	RF AGC	
SBY	SECAM B-Y BLACK ADJUST	
SRY	SECAM R-Y BLACK ADJUST	
BRTS	SUB BRIGHT shift data of BRTC	
TXCX	TEXT RGB CONTRAST MAX.	
RGCN	TEXT RGB CONTRAST MIN.	
SECD	SECAM MODE	

GROUP 9	KEY 8	
V25	VOLUME 25	
V50	VOLUME 50	
V100	VOLUME 100	

GROUP 10	KEY 9	
SVM	SVM	
PYNX	Normal H.SYNC max	
PYNN	Normal H.SYNC min	
PYXS	Search H.SYNC max	
PYNS	Search H.SYNC min	

GROUP 11	KEY CALENDAR	
CLTO	TV mode & SOUND SYS != M	
CLTM	TV mode & SOUND SYS = M	
CLVO	VIDEO	
CLVD	YUV MODE	

CLTO CLTM CLVO CLVD bit setting		
	7	KILLER OFF
	6	P/N ID
	5	C GAMMA
	4	NTSC-MATRIX
	3	
	2	Y DL
	1	
	0	

ABL	ABL SETUP	
	5	TB1254N RGB ABL
	4	TB1254N WPS
	3	ABLpoint setup
	2	
	1	
	0	
DCBS	VIDEO DATA SETUP	

	0~3	Y GAMMA BLACK STRETCH	
	4~5	OSD LEVEL	
DEF		V AGC SELECT	
	0	V AGC reference, 0:depends on YC Vcc	
	1	Depends on integrated regulator	

GROUP 14		KEY NOTE-BOOK	
OSD1		OSD Horizontal Position(volume bar, Picture bar,Half blue panel OSD)	
OSDF1		OSD PLL DATA(volume bar, Picture bar,Half blue panel OSD)	
OSD2		OSD Horizontal Position except OSD1 items	
OSDF2		OSD PLL DATA except OSDF1 items	
HAFC			
	0	when nois.2 = 1 ; TV hafc gain	
	1	if nois.2 = 0 TV hafc gain depend on noise(0~1)	
	2	in video mode hafc gain	
	3		
NOIS		HAFC DATA	
	0	noise det	
	1		
	2	fix the hafc gain	
UCOM		MCU DATA	

*Reset EEPROM Data: Press D-mode and Press 0752.

PART NO.	DESCRIPTION	QTY	Location
08-02188H-CRY	ASS'Y - CRT BD		
10-1N4148-ABX	DIODE 1N4148 (SWITCHING)	1	D502
10-1N4148-ABX	DIODE 1N4148 (SWITCHING)	1	D501
11-SA1015-YBX	TRANSISTOR 2SA1015Y	1	Q510
11-SC2482-0BX	TRANSISTOR 2SC2482	1	Q501
11-SC2482-0BX	TRANSISTOR 2SC2482	1	Q502
11-SC2482-0BX	TRANSISTOR 2SC2482	1	Q503
18-CB0101-JNX	RES. C.F. 100 OHM 1/6W +/-5%	1	R501
18-CB0101-JNX	RES. C.F. 100 OHM 1/6W +/-5%	1	R504
18-CB0101-JNX	RES. C.F. 100 OHM 1/6W +/-5%	1	R507
18-CB0102-JNX	RES. C.F. 1K OHM 1/6W +/-5%	1	R522
18-CB0272-JNX	RES. C.F. 2.7k OHM 1/6W +/-5%	1	R524
18-CB0472-JNX	RES. C.F. 4.7k OHM 1/6W +/-5%	1	R502
18-CB0472-JNX	RES. C.F. 4.7k OHM 1/6W +/-5%	1	R505
18-CB0472-JNX	RES. C.F. 4.7k OHM 1/6W +/-5%	1	R508
18-CB0681-JNX	RES. C.F. 680 OHM 1/6W +/-5%	1	R525
18-CB0681-JNX	RES. C.F. 680 OHM 1/6W +/-5%	1	R526
18-CB0681-JNX	RES. C.F. 680 OHM 1/6W +/-5%	1	R527
18-CB0681-JNX	RES. C.F. 680 OHM 1/6W +/-5%	1	R523
18-CB0751-JNX	RES. C.F. 750 OHM 1/6W +/-5%	1	R503
18-CB0751-JNX	RES. C.F. 750 OHM 1/6W +/-5%	1	R506
18-CB0751-JNX	RES. C.F. 750 OHM 1/6W +/-5%	1	R509
18-CD0104-JNX	RES. C.F. 100K OHM 1/4W +/-5%	1	R521
18-FE0272-JNX	RES. M.O. 2.7K OHM 1/2W +/-5%	1	R514
18-FE0272-JNX	RES. M.O. 2.7K OHM 1/2W +/-5%	1	R515
18-FE0272-JNX	RES. M.O. 2.7K OHM 1/2W +/-5%	1	R518
18-FG0153-JHX	RES. M.O. 15k OHM 2W +/-5%	1	R510
18-FG0153-JHX	RES. M.O. 15k OHM 2W +/-5%	1	R511
18-FG0153-JHX	RES. M.O. 15k OHM 2W +/-5%	1	R512
26-AIM103-KBX	CAP. CER 0.01UF 500V +/-10% B	1	C504
26-AMK221-KBX	CAP. CER 220PF 2KV +/-10% B	1	C505
26-EBP103-ZFX	CAP. CER 0.01UF 50V +80/-20% F	1	C514
26-EBP103-ZFX	CAP. CER 0.01UF 50V +80/-20% F	1	C507
26-EBP181-JCX	CAP. CER 180PF 50V +/-5% CH	1	C510
26-EBP181-JCX	CAP. CER 180PF 50V +/-5% CH	1	C511
26-EBP181-JCX	CAP. CER 180PF 50V +/-5% CH	1	C512
26-EBP681-JCX	CAP. CER 680 pF 50V +/-5%	1	C501
26-EBP681-JCX	CAP. CER 680 pF 50V +/-5%	1	C502
26-EBP681-JCX	CAP. CER 680 pF 50V +/-5%	1	C503
35-139730-00X	FERR. BEAD BF60	2	
40-02135S-CRD	P.C.B. CRT BD	1	
41-WJ0050-B00	WIRE BARE JUMPER 5MM	1	
41-WJ0050-B00	WIRE BARE JUMPER 5MM	1	
41-WJ0050-B00	WIRE BARE JUMPER 5MM	1	
41-WJ0075-B00	WIRE BARE JUMPER 7.5MM	1	J502
41-WJ0075-B00	WIRE BARE JUMPER 7.5MM	1	J503
41-WJ0100-B00	WIRE BARE JUMPER 10MM	1	J501
41-WJ0100-B00	WIRE BARE JUMPER 10MM	1	J504
46-10967W-01X	PIN BASE *1 TJC1-1A	1	P503
46-28816H-05X	HS 5P24 500 TJC3-5Y/SCN-5Y	1	
46-30615H-04X	HS 4P24 460 F/W TJC3-4Y/SCN-4	1	
25-BCB221-M1X	CAP. ELEC 220 UF 16V +/-20%	1	C508

47-CRT004-XX0	CRT SOCKET GZS10-2-AC2	1	
41-WJ0075-B00	WIRE BARE JUMPER 7.5MM	1	J505
08-0D166H-PW1	ASS'Y - POWER BD		
10-0FR104-FBX	DIODE FR104 (FAST RECTIFIER)	1	D830
10-0FR104-FBX	DIODE FR104 (FAST RECTIFIER)	1	D802
10-0FR104-FBX	DIODE FR104 (FAST RECTIFIER)	1	D833
10-1N4148-ABX	DIODE 1N4148 (SWITCHING)	1	D805
10-1SS136-ABX	DIODE 1SS136	1	D804
10-1SS136-ABX	DIODE 1SS136	1	D835
10-79C8V2-DBX	DIODE ZENER 8V2 1/2W 5%	1	D839
10-HER108-FBX	DIODE HER108	1	D806
10-HS16VC-DBX	DIODE 500mW 16HSC	1	D838
10-HS6V2B-DBX	DIODE 6V2 500mW	1	D840
11-SC1815-YBX	TRANSISTOR 2SC1815Y	1	Q832
11-SC1815-YBX	TRANSISTOR 2SC1815Y	1	Q831
11-SC2688-LAX	TRANSISTOR 2SC2688L (NPN)	1	Q830
11-SK2996-OAX	TRANSISTOR 2SK2996 (MOS)	1	Q801
13-0HPC92-2CP	PHOTO COUPLER HPC922-C	1	IC802
13-44608P-40P	IC MC44608P40	1	IC801
18-CB0102-JNX	RES. C.F. 1K OHM 1/6W +/-5%	1	R809
18-CB0103-JNX	RES. C.F. 10K OHM 1/6W +/-5%	1	R844
18-CB0332-JNX	RES. C.F. 3.3k OHM 1/6W +/-5%	1	R834
18-CB0333-JNX	RES. C.F. 33K OHM 1/6W +/-5%	1	R838
18-CB0362-JNX	RES. C.F. 3.6K OHM 1/6W +/-5%	1	R807
18-CB0472-JNX	RES. C.F. 4.7k OHM 1/6W +/-5%	1	R806
18-CB0622-JNX	RES. C.F. 6.2k OHM 1/6W +/-5%	1	R850
18-CD0123-JNX	RES. C.F. 12K OHM 1/4W +/-5%	1	R804A
18-CD0220-JNX	RES. C.F. 22 OHM 1/4W +/-5%	1	R811A
18-CD0221-JNX	RES. C.F. 220 OHM 1/4W +/-5%	1	R833
18-CD0392-JNX	RES. C.F. 3.9K OHM 1/4W +/-5%	1	R835
18-CD0471-JNX	RES. C.F. 470 OHM 1/4W +/-5%	1	R811
18-CE0479-JNX	RES. C.F. 4.7 OHM 1/2W +/-5%	1	R832
18-CE0563-JNX	RES. C.F. 56k OHM 1/2W +/-5%	1	R831
18-DD0104-FNX	RES. M.F. 0.1M OHM 1/4W +/-1%	1	R804
18-FG0153-JHX	RES. M.O. 15k OHM 2W +/-5%	1	R837
18-KF0825-JH3	RES. H.VOLT.CC 8.2M OHM 1W +/-5%	1	R812
20-TR103H-5CX	TRIMMER B10K HORIZ TYPE	1	VR830
22-NTC479-XX0	NTC 4.7 OHM +/-18% NTC4.7D2-14	1	RT802
25-382890-M1X	CAP. ELEC 150UF 400V +/-20% 30X30	1	C806
25-BCA102-M1X	CAP. ELEC 1000 UF 16V +/-20%	1	C849
25-BEB100-M1X	CAP. ELEC 10 UF 35V +/-20%	1	C812
25-BJG101-M1X	CAP. ELEC 100 UF 160V +/-20%	1	C835
26-ABC221-JZX	CAP. CER 220 PF 50V +/-5% SL	1	C841
26-AGK221-KRX	CAP. CER 220 PF 250V +/-10%	1	C830
26-AIC472-KBX	CAP. CER 4700 PF 500V +/-10% B	1	C807
26-AIC472-KBX	CAP. CER 4700 PF 500V +/-10% B	1	C808
26-AIM103-KBX	CAP. CER 0.01UF 500V +/-10% B	1	C834
26-AIM103-KBX	CAP. CER 0.01UF 500V +/-10% B	1	C805
26-AKK221-KRX	CAP. CER 220 PF 1KV +/-10% R	1	C833
26-AMK102-KRX	CAP. CER 1000 pF 2KV +/-10% R	1	C815
26-EBP102-KBX	CAP. CER 1000 PF 50V +/-10% B	1	C848
26-EBP102-KBX	CAP. CER 1000 PF 50V +/-10% B	1	C804A
27-AQT224-MVH	CAP. M.PP 0.22 UF 275VAC 20%	1	C801

27-MBC104-J0X	CAP. M.P.E 0.1 UF 63V +/-5%	1	C836
27-MBC104-J0X	CAP. M.P.E 0.1 UF 63V +/-5%	1	C850
27-MHM104-K0X	CAP. METAL P.E. 0.1UF 400V 10%	1	C802A
27-RJP472-J0X	CAP. PP 4700 PF 630V +/-5%	1	C809
34-R101K2-1BX	COIL CHOKE 100 UH +/-10%	1	L804
34-R330J2-0EX	COIL PL - 33 UH +/-5%	1	L843
35-139730-00X	FERR. BEAD BF60	2	
35-139730-00X	FERR. BEAD BF60	2	
35-139730-00X	FERR. BEAD BF60	2	
35-139730-00X	FERR. BEAD BF60	2	
36-LIF004-XX0	LINE FILTER LCL-2821	1	T801
41-WJ0050-B00	WIRE BARE JUMPER 5MM	1	J800A
41-WJ0050-B00	WIRE BARE JUMPER 5MM	1	J800B
41-WJ0050-B00	WIRE BARE JUMPER 5MM	1	J800C
41-WJ0050-B00	WIRE BARE JUMPER 5MM	1	J800D
41-WJ0050-B00	WIRE BARE JUMPER 5MM	1	J801A
41-WJ0050-B00	WIRE BARE JUMPER 5MM	1	J801B
41-WJ0050-B00	WIRE BARE JUMPER 5MM	1	J801C
41-WJ0050-B00	WIRE BARE JUMPER 5MM	1	J801D
41-WJ0065-B00	WIRE BARE JUMPER 6.5MM	1	J810
41-WJ0075-B00	WIRE BARE JUMPER 7.5MM	1	J809
41-WJ0085-B00	WIRE BARE JUMPER 8.5MM	1	J812
41-WJ0090-B00	WIRE BARE JUMPER 9MM	1	J805
41-WJ0100-B00	WIRE BARE JUMPER 10MM	1	R804B
41-WJ0100-B00	WIRE BARE JUMPER 10MM	1	J822
41-WJ0100-B00	WIRE BARE JUMPER 10MM	1	J827
41-WJ0100-B00	WIRE BARE JUMPER 10MM	1	R807A
41-WJ0105-B00	WIRE BARE JUMPER 10.5MM	1	J824
41-WJ0110-B00	WIRE BARE JUMPER 11MM	2	
41-WJ0115-B00	WIRE BARE JUMPER 11.5MM	1	J823
41-WJ0125-B00	WIRE BARE JUMPER 12.5MM	1	J804
41-WJ0125-B00	WIRE BARE JUMPER 12.5MM	1	J808
41-WJ0125-B00	WIRE BARE JUMPER 12.5MM	1	J832
41-WJ0145-B00	WIRE BARE JUMPER 14.5MM	1	J826
41-WJ0150-B00	WIRE BARE JUMPER 15MM	1	J802
41-WJ0150-B00	WIRE BARE JUMPER 15MM	1	J821
41-WJ0160-B00	WIRE BARE JUMPER 16MM	1	J825
41-WJ0170-B00	WIRE BARE JUMPER 17MM	1	J830
41-WJ0175-B00	WIRE BARE JUMPER 17.5MM	1	J807
41-WJ0175-B00	WIRE BARE JUMPER 17.5MM	1	J831
41-WJ0190-B00	WIRE BARE JUMPER 19MM	1	J811
41-WJ0195-B00	WIRE BARE JUMPER 19.5MM	1	J828
41-WJ0195-B00	WIRE BARE JUMPER 19.5MM	1	J829
46-10962W-02X	PIN BASE *2 TJC2-2A	1	P801
46-28559W-02X	PIN BASE *2 TJC1-2A	1	P802
50-02000D-1VS7	FUSE 250V/2A	1	F801
64-B30100-104	M/C SCREW B 3 X 10	1	
66-20516X-0B0	FUSE HOLDER	2	
66-343730-0B0	HOLLOW RIVET 1.6X3.0XL3.2	2	
66-343730-0B0	HOLLOW RIVET 1.6X3.0XL3.2	4	
66-343730-0B0	HOLLOW RIVET 1.6X3.0XL3.2	3	
66-343730-0B0	HOLLOW RIVET 1.6X3.0XL3.2	6	
71-DYP000-WX1	LABEL	1	

90-209770-SR1	SILICONE GREASE G-746	0.0006	
66-382330-0B7	RIVET 2.0X3.7X3.5	8	
67-H35984-5A0	HEAT SINK	1	
18-RG0228-JHX	RES. WIRE ROUND 0.22 OHM 2W +/-5%	1	R810
26-EBP101-JCX	CAP. CER 100PF 50V +/-5% CH	1	C814
25-BCA102-M1X	CAP. ELEC 1000 UF 16V +/-20%	1	C832
26-EBP471-JCX	CAP. CER 470PF 50V +/-5% CH	1	C851
10-ORU3AM-F0X	DIODE RU3AM (FAST RECOVERY)	1	D831
26-EBP103-ZFX	CAP. CER 0.01UF 50V +80/-20% F	1	C813
26-EBP103-ZFX	CAP. CER 0.01UF 50V +80/-20% F	1	C831
26-EBP103-ZFX	CAP. CER 0.01UF 50V +80/-20% F	1	C842
10-ORL255-EBX	DIODE RL255 (POWER RECTIFIER)	1	D815
10-ORL255-EBX	DIODE RL255 (POWER RECTIFIER)	1	D816
10-ORL255-EBX	DIODE RL255 (POWER RECTIFIER)	1	D817
10-ORL255-EBX	DIODE RL255 (POWER RECTIFIER)	1	D818
22-PTC200-XX1	PTC 20 OHM +/-20%	1	RT801
36-TRF133-AX0	TRANSFORMER CONV.BCK-3546	1	T803
18-GJ0103-KUX	RES. CEMENT 10K OHM 5W +/-10%	1	R836
18-GJ0223-KUX	RES. WIRE ROUND 22k OHM 5W +/-10%	1	R808
26-APK102-ME4	CAP. CER 1000PF 400VAC+/-20% E	1	C816
26-APK102-ME4	CAP. CER 1000PF 400VAC+/-20% E	1	C803
26-APK102-ME4	CAP. CER 1000PF 400VAC+/-20% E	1	C804
25-BDA471-M1X	CAP. ELEC 470 UF 25V +/-20%	1	C843
08-0D181H-FC2	ASS'Y - FRONT CAB(LS-PM)		
02-GND021-XX0	ASS"Y - CRT GND WIRE&HOUSE	1	
36-DEG210-BX3	DEGAUSSING COIL 2500mm	1	
42-51208D-AX1	SPEAKER 5W 8 OHM	1	W601
42-51208D-AX1	SPEAKER 5W 8 OHM	1	W602
44-21RFLS-PM2A	21"CRT A51LYZ095X90	1	CRT01
46-27250H-02X	HS 2P24 450/5 F/W TJC3-02H	1	
46-37144H-02X	HS 2P 2468#22 450mm S11-2Y/7mm	1	
54-113970-0U0	PVC TUBE #5 L=ROLL	0.32	
54-128700-0X0	FIBRE WASHER 3.3 X 10 X 0.8	1	
54-205140-000	SPACER CRT MOUNTING T=2MM	4	
55-D181FC-0AN	FRONT CABINET	1	
56-396460-0HA	DECORATIVE LENS	1	
56-D181FB-0HA	PUSH BUTTON	1	
56-D181LS-0HC	LENS	1	
56-D181PK-0HA	POWER KNOB	1	
59-130460-00X	RUBBER PAD (25mmX7mm)	2	
62-345690-1UN	ASSISTANT RAIL HIPS-KINGFA 113 (VO)	1	
63-B30080-AB4	S/T SCREW B 3 X 8 AB	1	
63-S30100-AB4	S/T SCREW S 3 X 10 AB	2	
63-B30100-AB4	S/T SCREW B 3 X 10 AB	3	
63-W30100-AB4	S/T SCREW W 3 X 10 AB	8	
63-W30100-AB4	S/T SCREW W 3 X 10 AB	2	
63-W30120-AB4	S/T SCREW W 3 X 12 AB	22	
65-A60200-20E	WASHER 6 X 20 X 2MM	4	
67-X12668-0E0	SPRING CRT 6mmX40mmX0.5mm	1	
67-X24970-0E0	SPRING	1	
57-10654X-00F	cable ties□(2.5mmX95mm)	10	
54-314740-0X0	CRT FIBRE SHEET (22mmX22mmX0.8mm)	8	
46-27688H-04X	HS 4P A/B 400/13 RBGW TJC1/4Y	1	

18-CB0225-JNX	RES. C.F. 2.2M OHM 1/6W +/-5%	1	R1
41-BF0450-0BB	WIRE UL1007#24 450 BLACK	1	FOR R1
67-105580-0E2	SOLDERING TAG	1	FOR R1
54-343300-0X0	HEAT SHRINKABLE TUBE 3 X 0.25	0.02	
63-H60250-AB4	S/T SCREW H 6 X 25 AB	4	
65-A35120-12E	WASHER	2	
55-D181MC-1AN	MIDDLE CABINET	1	
63-W30080-AB4	S/T SCREW W 3 X 8 AB	1	
56-C276LS-0HC	LENS	1	
08-0D181H-KEY	ASS'Y - KEY BD		
18-CB0152-JNX	RES. C.F. 1.5k OHM 1/6W +/-5%	1	R022A
18-CB0182-JNX	RES. C.F. 1.8K OHM 1/6W +/-5%	1	R023A
18-CB0272-JNX	RES. C.F. 2.7k OHM 1/6W +/-5%	1	R024A
18-CB0432-JNX	RES. C.F. 4.3K OHM 1/6W +/-5%	1	R025A
18-CB0470-JNX	RES. C.F. 47 OHM 1/6W +/-5%	1	R013A
18-CB0622-JNX	RES. C.F. 6.2k OHM 1/6W +/-5%	1	R026A
25-HCB220-M1X	CAP. ELEC 22 UF 16V +/-20%	1	C011A
40-21181H-KEA	P.C.B. KEY BD	1	
41-WJ0050-B00	WIRE BARE JUMPER 5MM	1	R016A
41-WJ0065-B00	WIRE BARE JUMPER 6.5MM	1	R018A
46-31789H-02X	HS 2P22 400 MM TJC3-2Y/SCN-2Y	1	
46-31789H-02X	HS 2P22 400 MM TJC3-2Y/SCN-2Y	1	
46-28553H-04X	HS 4P24 400 F/W TJC3-4Y SCN-4Y	1	
48-TAC001-XX0	TACT SWITCH	1	S001A
48-TAC001-XX0	TACT SWITCH	1	S002A
48-TAC001-XX0	TACT SWITCH	1	S003A
48-TAC001-XX0	TACT SWITCH	1	S004A
48-TAC001-XX0	TACT SWITCH	1	S005A
48-TAC001-XX0	TACT SWITCH	1	S006A
02-IRR001-XX1	IR RECEIVER MODULE HRM380017	1	IR001
08-0D181H-RC2	ASS'Y - REAR CAB(94V0,RCA)		
54-114000-00X	FELT TAPE (150mmX19mmX0.3mm)	7	
55-D189RC-1AN	REAR CABINET	1	
58-D106SI-3UI	INLAY SIDE AV	1	
58-D181MP-0UI	PLATE MODEL NO.	1	
58-D192RI-8UI	INLAY REAR AV	1	
59-130460-00X	RUBBER PAD (25mmX7mm)	2	
62-314340-0UN	FBT SUPPORTER HIPS-KINGFA 113 (VO)	1	
62-378080-1UN	TRACK	1	
62-389620-0UD	POWER LINE BLOCK	1	
63-B40200-AB2	S/T SCREW B 4 X 20 AB	6	
63-F30100-BT3	S/T SCREW F 3 X 10 BT (BLACK)	2	
63-W30100-AB4	S/T SCREW W 3 X 10 AB	2	
63-W30100-AB4	S/T SCREW W 3 X 10 AB	2	
63-W30100-AB4	S/T SCREW W 3 X 10 AB	2	
08-0D181H-SW3	ASS'Y - POWER SWITCH (SAA)		
14-LED03R-XX0	LED RED HFR303J(R)(3mm)	1	D001
46-39318H-02X	HS 2P 1617#22 300 TJC-1-26/VH-3Y	1	
46-33079W-02X	PIN BASE *2 TJC3-2A	1	
46-35063W-03X	PIN BASE *3 VH-3A	1	
48-POW001-AX0	SWITCH POWER	1	SW801
46-35063W-03X	PIN BASE *3 VH-3A	1	P801
51-JC0243-0PN01	POWER CORD	1	

66-382330-0B7	RIVET 2.0X3.7X3.5	4	
40-21181H-SWA0X	P.C.B. BD	1	
66-382330-0B7	RIVET 2.0X3.7X3.5	4	
41-WJ0060-B00	WIRE BARE JUMPER 6mm	1	J001
41-WJ0060-B00	WIRE BARE JUMPER 6mm	1	J002
57-LEDK10-000	LED BRACKET	1	
08-0D276H-AVY	ASS'Y - SIDE AV BD		
40-21189H-SIA	P.C.B. SIDE AV BD	1	
46-30790H-06X	HS 6P24 400 TJC3-6Y/SCN-6Y	1	
47-RCA001-XX0	RCA SOCKET AV-8.4-6 (RED)	1	P1103
47-RCA002-XX0	RCA SOCKET AV-8.4-6 (WHITE)	1	P1102
47-RCA003-XX0	RCA SOCKET AV-8.4-6 (YELLOW)	1	P1101
08-D1814H-PA1	ASS'Y - PACKING PARTS(23)		
72-D1814H-E23	OPERATION MANUAL	1	
74-022032-6WE	POLYBAG (23cmX34cmX0.06mm)	1	
74-120120-80HAA	POLYBAG W/SUFFOCATION WARNING	1	
75-D181LL-CC0	POLYFOAM "LL"	1	
75-D181LR-CC0	POLYFOAM "LR"	1	
75-D181UL-CC0	POLYFOAM "UL"	1	
75-D181UR-CC0	POLYFOAM "UR"	1	
76-A21181-0AT	CARTON BOX	1	
49-382550-BAT	BATTERY R06P AA 1.5V 5#	2	
08-HS46F0-M28A	ASS'Y - IR HANDSET(4H) RC951		
13-00AS12-13B	IC AS1213B	1	IC1501
14-IRE05B-XX0	IR EMITTING DIODE TSAL6200	1	D1501
18-CB0221-JNX	RES. C.F. 220 OHM 1/6W +/-5%	1	R1502
18-CB0229-JNX	RES. C.F. 2.2 OHM 1/6W +/-5%	1	R1501
25-HBB479-M1X	CAP. ELEC 4.7 UF 10V +/-20%	1	C1502
26-EBP101-JCX	CAP. CER 100PF 50V +/-5% CH	1	C1503
26-EBP101-JCX	CAP. CER 100PF 50V +/-5% CH	1	C1504
40-113SLF-RMB	P.C.B. REMOTE HANDSET BD	1	
41-WJ0070-B00	WIRE BARE JUMPER 7MM	1	J1501
45-COS455-KY1	CERAMIC RESONATOR 455KHz	1	X1501
49-HS46F0-00X	RUBBER PAD KEYS	1	
55-HS46FB-0HA	CASE LOWER - REMOTE HANDSET	1	
55-HS46FD-0HA	DOOR BATT. - REMOTE HANDSET	1	
55-HS46FT-0HA	CASE UPPER - REMOTE HANDSET	1	
58-HS46F3-7UI	INLAY REMOTE HANDSET	1	
63-B26060-BT2	S/T SCREW B 2.6 X 6 BT	1	
67-X26968-0E2	BATT. TERMINAL (+/-)	1	
67-X31028-0E2	SPRING - BATTERY (-)	1	
67-X31029-0E2	SPRING - BATTERY (+)	1	
74-009022-60C	POLYBAG HANDSET (9CMX22CM)	1	
11-0BC337-0BX	TRANSISTOR (NPN) BC337-40	1	Q1501
08-D1814H-MA2	ASS'Y - MAIN BD		
10-0FR104-FBX	DIODE FR104 (FAST RECTIFIER)	1	D401
10-0FR104-FBX	DIODE FR104 (FAST RECTIFIER)	1	D402
10-1N4001-EBX	DIODE 1N4001 (RECTIFIER)	1	D301
10-1N4002-EBX	DIODE 1N4002 (RECTIFIER)	1	D405
10-1N4148-ABX	DIODE 1N4148 (SWITCHING)	1	D005
10-1N4148-ABX	DIODE 1N4148 (SWITCHING)	1	D206
10-1N4148-ABX	DIODE 1N4148 (SWITCHING)	1	D006
10-1N4148-ABX	DIODE 1N4148 (SWITCHING)	1	D007

10-1N4148-ABX	DIODE 1N4148 (SWITCHING)	1	D601
10-1N4148-ABX	DIODE 1N4148 (SWITCHING)	1	D008
10-1N4148-ABX	DIODE 1N4148 (SWITCHING)	1	D002
10-79C5V1-DBX	DIODE ZENER 5V1 1/2W 5%	1	D001
10-79C6V2-DBX	DIODE ZENER 6V2 1/2W 5%	1	D404
11-2N3904-0BX	TRANSISTOR 2N3904 (NPN)	1	Q103
11-C124ES-0BX	TRANSISTOR PDTC124ES (NPN)	1	Q604
11-C144ES-0BX	TRANSISTOR PDTC144ES (NPN)	1	Q606
11-C144ES-0BX	TRANSISTOR PDTC144ES (NPN)	1	Q607
11-C144ES-0BX	TRANSISTOR PDTC144ES (NPN)	1	Q211
11-DD1555-0AX	TRANSISTOR 3DD1555	1	Q402
11-SA1015-YBX	TRANSISTOR 2SA1015Y	1	Q003
11-SA1015-YBX	TRANSISTOR 2SA1015Y	1	Q202
11-SA1015-YBX	TRANSISTOR 2SA1015Y	1	Q005
11-SA1015-YBX	TRANSISTOR 2SA1015Y	1	Q209
11-SA1015-YBX	TRANSISTOR 2SA1015Y	1	Q210
11-SA1015-YBX	TRANSISTOR 2SA1015Y	1	Q605
11-SC1815-YBX	TRANSISTOR 2SC1815Y	1	Q203
11-SC1815-YBX	TRANSISTOR 2SC1815Y	1	Q002
11-SC1815-YBX	TRANSISTOR 2SC1815Y	1	Q208
11-SC1815-YBX	TRANSISTOR 2SC1815Y	1	Q905
11-SC1815-YBX	TRANSISTOR 2SC1815Y	1	Q609
11-SC1815-YBX	TRANSISTOR 2SC1815Y	1	Q603
11-SC1815-YBX	TRANSISTOR 2SC1815Y	1	Q608
11-SC2482-0BX	TRANSISTOR 2SC2482	1	Q401
11-SC3779-DBX	TRANSISTOR 2SC3779D (RF AMPL)	1	Q101
13-000040-66P	IC 4066 (ANALOG SW.)	1	IC603
13-00M24C-08P	IC EEPROM 8K M24C08	1	IC001
13-L7809C-VAP	IC L7809CV	1	IC401
13-LA7840-00S	IC LA7840	1	IC301
13-TDA705-7AS	IC TDA7057AQ (R/L AUDIO O/P)	1	IC601
18-CB0101-JNX	RES. C.F. 100 OHM 1/6W +/-5%	1	R001A
18-CB0101-JNX	RES. C.F. 100 OHM 1/6W +/-5%	1	R033
18-CB0101-JNX	RES. C.F. 100 OHM 1/6W +/-5%	1	R034
18-CB0101-JNX	RES. C.F. 100 OHM 1/6W +/-5%	1	R047
18-CB0101-JNX	RES. C.F. 100 OHM 1/6W +/-5%	1	R218
18-CB0102-JNX	RES. C.F. 1K OHM 1/6W +/-5%	1	R005
18-CB0102-JNX	RES. C.F. 1K OHM 1/6W +/-5%	1	R013
18-CB0102-JNX	RES. C.F. 1K OHM 1/6W +/-5%	1	R015
18-CB0102-JNX	RES. C.F. 1K OHM 1/6W +/-5%	1	R029
18-CB0102-JNX	RES. C.F. 1K OHM 1/6W +/-5%	1	R116
18-CB0102-JNX	RES. C.F. 1K OHM 1/6W +/-5%	1	R415
18-CB0102-JNX	RES. C.F. 1K OHM 1/6W +/-5%	1	R604A
18-CB0102-JNX	RES. C.F. 1K OHM 1/6W +/-5%	1	R610
18-CB0102-JNX	RES. C.F. 1K OHM 1/6W +/-5%	1	R622
18-CB0102-JNX	RES. C.F. 1K OHM 1/6W +/-5%	1	R637
18-CB0102-JNX	RES. C.F. 1K OHM 1/6W +/-5%	1	R901
18-CB0102-JNX	RES. C.F. 1K OHM 1/6W +/-5%	1	R912
18-CB0102-JNX	RES. C.F. 1K OHM 1/6W +/-5%	1	R961
18-CB0102-JNX	RES. C.F. 1K OHM 1/6W +/-5%	1	R962
18-CB0103-JNX	RES. C.F. 10K OHM 1/6W +/-5%	1	R009
18-CB0103-JNX	RES. C.F. 10K OHM 1/6W +/-5%	1	R001
18-CB0103-JNX	RES. C.F. 10K OHM 1/6W +/-5%	1	R019

18-CB0103-JNX	RES. C.F. 10K OHM 1/6W +/-5%	1	R030
18-CB0103-JNX	RES. C.F. 10K OHM 1/6W +/-5%	1	R032
18-CB0103-JNX	RES. C.F. 10K OHM 1/6W +/-5%	1	R611
18-CB0103-JNX	RES. C.F. 10K OHM 1/6W +/-5%	1	R614
18-CB0103-JNX	RES. C.F. 10K OHM 1/6W +/-5%	1	R406
18-CB0103-JNX	RES. C.F. 10K OHM 1/6W +/-5%	1	R017
18-CB0104-JNX	RES. C.F. 100K OHM 1/6W +/-5%	1	R031
18-CB0122-JNX	RES. C.F. 1.2k OHM 1/6W +/-5%	1	R010
18-CB0123-JNX	RES. C.F. 12k OHM 1/6W +/-5%	1	R212
18-CB0151-JNX	RES. C.F. 150 OHM 1/6W +/-5%	1	R217
18-CB0151-JNX	RES. C.F. 150 OHM 1/6W +/-5%	1	R115
18-CB0151-JNX	RES. C.F. 150 OHM 1/6W +/-5%	1	R117
18-CB0153-JNX	RES. C.F. 15k OHM 1/6W +/-5%	1	R111
18-CB0153-JNX	RES. C.F. 15k OHM 1/6W +/-5%	1	R112
18-CB0183-JNX	RES. C.F. 18k OHM 1/6W +/-5%	1	R414
18-CB0221-JNX	RES. C.F. 220 OHM 1/6W +/-5%	1	R201
18-CB0221-JNX	RES. C.F. 220 OHM 1/6W +/-5%	1	R202
18-CB0221-JNX	RES. C.F. 220 OHM 1/6W +/-5%	1	R203
18-CB0222-JNX	RES. C.F. 2.2k OHM 1/6W +/-5%	1	R016
18-CB0222-JNX	RES. C.F. 2.2k OHM 1/6W +/-5%	1	R042
18-CB0223-JNX	RES. C.F. 22k OHM 1/6W +/-5%	1	R014
18-CB0223-JNX	RES. C.F. 22k OHM 1/6W +/-5%	1	R215
18-CB0223-JNX	RES. C.F. 22k OHM 1/6W +/-5%	1	R633
18-CB0223-JNX	RES. C.F. 22k OHM 1/6W +/-5%	1	R636
18-CB0224-JNX	RES. C.F. 220k OHM 1/6W +/-5%	1	R206
18-CB0271-JNX	RES. C.F. 270 OHM 1/6W +/-5%	1	R233
18-CB0273-JNX	RES. C.F. 27k OHM 1/6W +/-5%	1	R922A
18-CB0303-JNX	RES. C.F. 30K OHM 1/6W +/-5%	1	R205
18-CB0331-JNX	RES. C.F. 330 OHM 1/6W +/-5%	1	R219
18-CB0331-JNX	RES. C.F. 330 OHM 1/6W +/-5%	1	R228
18-CB0331-JNX	RES. C.F. 330 OHM 1/6W +/-5%	1	R227
18-CB0331-JNX	RES. C.F. 330 OHM 1/6W +/-5%	1	R220
18-CB0332-JNX	RES. C.F. 3.3k OHM 1/6W +/-5%	1	R218A
18-CB0332-JNX	RES. C.F. 3.3k OHM 1/6W +/-5%	1	R046
18-CB0333-JNX	RES. C.F. 33K OHM 1/6W +/-5%	1	R110
18-CB0333-JNX	RES. C.F. 33K OHM 1/6W +/-5%	1	R602
18-CB0333-JNX	RES. C.F. 33K OHM 1/6W +/-5%	1	R922
18-CB0333-JNX	RES. C.F. 33K OHM 1/6W +/-5%	1	R232
18-CB0392-JNX	RES. C.F. 3.9K OHM 1/6W +/-5%	1	R213
18-CB0392-JNX	RES. C.F. 3.9K OHM 1/6W +/-5%	1	R307
18-CB0392-JNX	RES. C.F. 3.9K OHM 1/6W +/-5%	1	R214
18-CB0392-JNX	RES. C.F. 3.9K OHM 1/6W +/-5%	1	R007
18-CB0470-JNX	RES. C.F. 47 OHM 1/6W +/-5%	1	R002
18-CB0471-JNX	RES. C.F. 470 OHM 1/6W +/-5%	1	R119
18-CB0471-JNX	RES. C.F. 470 OHM 1/6W +/-5%	1	R238
18-CB0471-JNX	RES. C.F. 470 OHM 1/6W +/-5%	1	R243
18-CB0471-JNX	RES. C.F. 470 OHM 1/6W +/-5%	1	R401
18-CB0471-JNX	RES. C.F. 470 OHM 1/6W +/-5%	1	R923
18-CB0471-JNX	RES. C.F. 470 OHM 1/6W +/-5%	1	R020
18-CB0472-JNX	RES. C.F. 4.7k OHM 1/6W +/-5%	1	R244
18-CB0472-JNX	RES. C.F. 4.7k OHM 1/6W +/-5%	1	R308
18-CB0472-JNX	RES. C.F. 4.7k OHM 1/6W +/-5%	1	R612
18-CB0472-JNX	RES. C.F. 4.7k OHM 1/6W +/-5%	1	R613

18-CB0472-JNX	RES. C.F. 4.7k OHM 1/6W +/-5%	1	R011
18-CB0473-JNX	RES. C.F. 47K OHM 1/6W +/-5%	1	R109
18-CB0473-JNX	RES. C.F. 47K OHM 1/6W +/-5%	1	R216
18-CB0473-JNX	RES. C.F. 47K OHM 1/6W +/-5%	1	R245
18-CB0473-JNX	RES. C.F. 47K OHM 1/6W +/-5%	1	R924
18-CB0473-JNX	RES. C.F. 47K OHM 1/6W +/-5%	1	R927
18-CB0473-JNX	RES. C.F. 47K OHM 1/6W +/-5%	1	R925
18-CB0473-JNX	RES. C.F. 47K OHM 1/6W +/-5%	1	R926
18-CB0560-JNX	RES. C.F. 56 OHM 1/6W +/-5%	1	R114
18-CB0561-JNX	RES. C.F. 560 OHM 1/6W +/-5%	1	R209
18-CB0564-JNX	RES. C.F. 560K OHM 1/6W +/-5%	1	R210
18-CB0681-JNX	RES. C.F. 680 OHM 1/6W +/-5%	1	R028
18-CB0683-JNX	RES. C.F. 68K OHM 1/6W +/-5%	1	R211
18-CB0750-JNX	RES. C.F. 75 OHM 1/6W +/-5%	1	R904
18-CB0820-JNX	RES. C.F. 82 OHM 1/6W +/-5%	1	R914
18-CB0821-JNX	RES. C.F. 820 OHM 1/6W +/-5%	1	R118
18-CB0822-JNX	RES. C.F. 8.2K OHM 1/6W +/-5%	1	R237
18-CB0822-JNX	RES. C.F. 8.2K OHM 1/6W +/-5%	1	R006
18-CB0822-JNX	RES. C.F. 8.2K OHM 1/6W +/-5%	1	R312
18-CD0100-JNX	RES. C.F. 10 OHM 1/4W +/-5%	1	R027
18-CD0479-JNX	RES. C.F. 4.7 OHM 1/4W +/-5%	1	R640
18-CD0562-JNX	RES. C.F. 5.6K OHM 1/4W +/-5%	1	R310
18-CD0822-JNX	RES. C.F. 8.2K OHM 1/4W +/-5%	1	R309
18-CE0109-JNX	RES. C.F. 1 OHM 1/2W +/-5%	1	R314
18-CE0331-JNX	RES. C.F. 330 OHM 1/2W +/-5%	1	R409
18-CE0560-JNX	RES. C.F. 56 OHM 1/2W +/-5%	1	R317
18-EF0109-JGX	RES. FUS. 1 OHM 1W +/-5% (LS)	1	R403
18-EF0109-JGX	RES. FUS. 1 OHM 1W +/-5% (LS)	1	R405
18-EF0109-JGX	RES. FUS. 1 OHM 1W +/-5% (LS)	1	R418
18-EG0339-JHX	RES. FUS. 3.3 OHM 2W +/-5%	1	R407
18-FF0103-JGX	RES. M.O. 10k OHM 1W +/-5%	1	R410
18-FF0472-JGX	RES. M.O. 4.7K OHM 1W +/-5%	1	R441
18-FF0123-JGX	RES. M.O. 12k OHM 1W +/-5%	1	R408
18-FF0221-JGX	RES. M.O. 220 OHM 1W +/-5%	1	R336
18-FF0560-JGX	RES. M.O. 56 OHM 1W +/-5%	1	R108
18-FG0109-JHX	RES. M.O. 1 OHM 2W +/-5%	1	R313
18-FG0153-JHX	RES. M.O. 15k OHM 2W +/-5%	1	R404
25-BCB100-M1X	CAP. ELEC 10 UF 16V +/-20%	1	C004
25-BCB100-M1X	CAP. ELEC 10 UF 16V +/-20%	1	C023
25-BCB100-M1X	CAP. ELEC 10 UF 16V +/-20%	1	C227
25-BCB100-M1X	CAP. ELEC 10 UF 16V +/-20%	1	C242
25-BCB100-M1X	CAP. ELEC 10 UF 16V +/-20%	1	C907
25-BCB100-M1X	CAP. ELEC 10 UF 16V +/-20%	1	C908
25-BCB100-M1X	CAP. ELEC 10 UF 16V +/-20%	1	C220
25-BCB101-M1X	CAP. ELEC 100 UF 16V +/-20%	1	C016
25-BCB101-M1X	CAP. ELEC 100 UF 16V +/-20%	1	C240
25-BCB101-M1X	CAP. ELEC 100 UF 16V +/-20%	1	C605
25-BCB101-M1X	CAP. ELEC 100 UF 16V +/-20%	1	C211
25-BCB101-M1X	CAP. ELEC 100 UF 16V +/-20%	1	C416
25-BCB101-M1X	CAP. ELEC 100 UF 16V +/-20%	1	C009
25-BCB220-M1X	CAP. ELEC 22 UF 16V +/-20%	1	C909
25-BCB220-M1X	CAP. ELEC 22 UF 16V +/-20%	1	C305
25-BCB221-M1X	CAP. ELEC 220 UF 16V +/-20%	1	C232

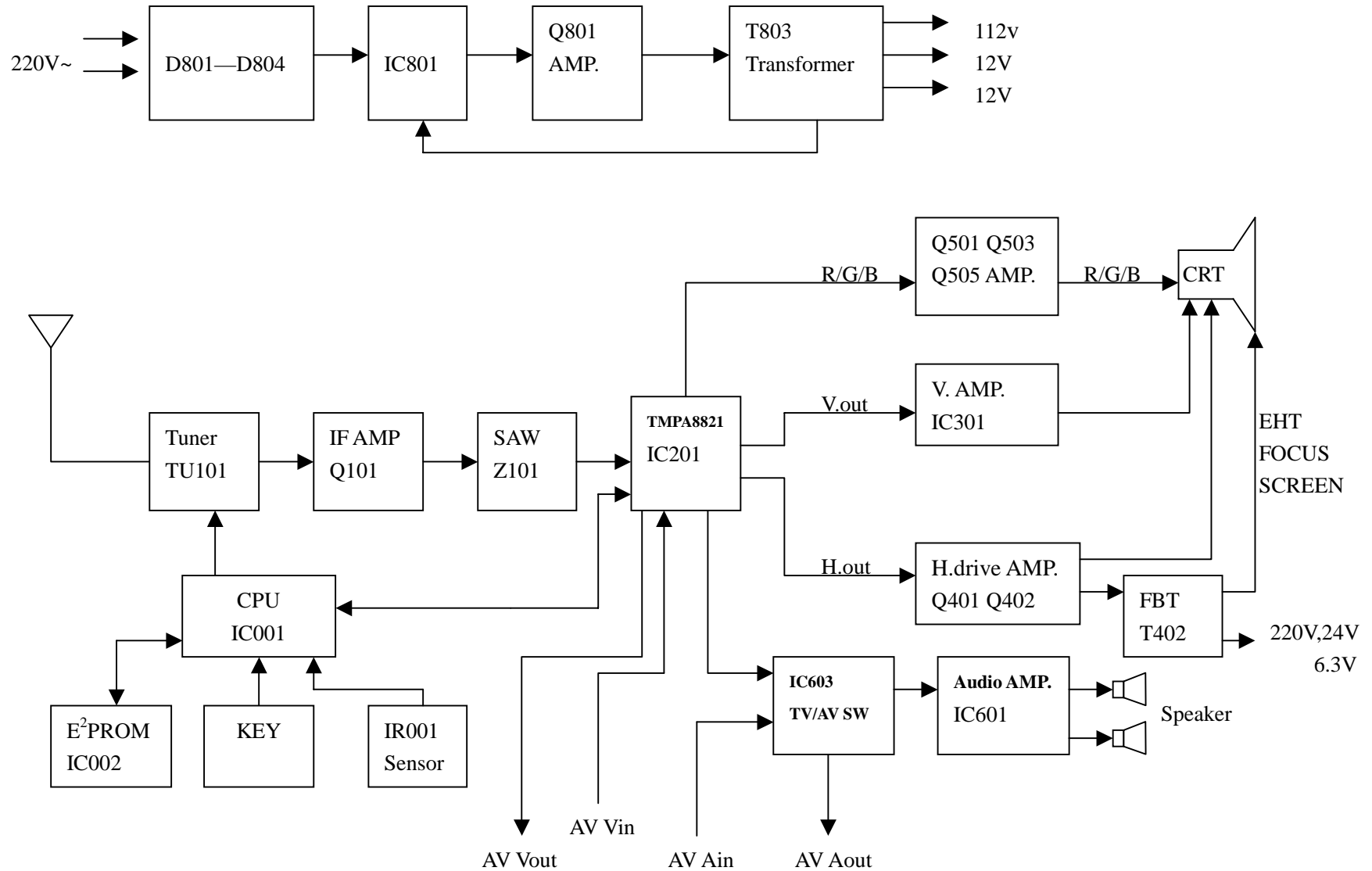
25-BCB221-M1X	CAP. ELEC 220 UF 16V +/-20%	1	C635
25-BCB221-M1X	CAP. ELEC 220 UF 16V +/-20%	1	C903
25-BCB470-M1X	CAP. ELEC 47 UF 16V +/-20%	1	C423
25-BCB470-M1X	CAP. ELEC 47 UF 16V +/-20%	1	C202
25-BCB470-M1X	CAP. ELEC 47 UF 16V +/-20%	1	C108
25-BCB470-M1X	CAP. ELEC 47 UF 16V +/-20%	1	C081
25-BCB470-M1X	CAP. ELEC 47 UF 16V +/-20%	1	C418
25-BCB471-M1X	CAP. ELEC 470 UF 16V +/-20%	1	C217
25-BDA102-M1X	CAP. ELEC 1000 UF 25V +/-20%	1	C308
25-BDA471-M1X	CAP. ELEC 470 UF 25V +/-20%	1	C604
25-BEA221-M1X	CAP. ELEC 220 UF 35V +/-20%	1	C302
25-BEA471-M1X	CAP. ELEC 470 UF 35V +/-20%	1	C413
25-BEB101-M1X	CAP. ELEC 100 UF 35V +/-20%	1	C303
25-BFB109-M1X	CAP. ELEC 1 UF 50V +/-20%	1	C208
25-BFB109-M1X	CAP. ELEC 1 UF 50V +/-20%	1	C622
25-BFB109-M1X	CAP. ELEC 1 UF 50V +/-20%	1	C624
25-BFB109-M1X	CAP. ELEC 1 UF 50V +/-20%	1	C203
25-BFB109-M1X	CAP. ELEC 1 UF 50V +/-20%	1	C214
25-BFB229-M1X	CAP. ELEC 2.2 UF 50V +/-20%	1	C008A
25-BFB478-M1X	CAP. ELEC 0.47 UF 50V +/-20%	1	C218
25-BFB479-M1X	CAP. ELEC 4.7 UF 50V +/-20%	1	C307
25-BFB479-M1X	CAP. ELEC 4.7 UF 50V +/-20%	1	C101
25-BFB479-M1X	CAP. ELEC 4.7 UF 50V +/-20%	1	C103
25-BFB479-M1X	CAP. ELEC 4.7 UF 50V +/-20%	1	C216
25-BFB479-M1X	CAP. ELEC 4.7 UF 50V +/-20%	1	C601
25-BFB479-M1X	CAP. ELEC 4.7 UF 50V +/-20%	1	C602
25-BFB479-M1X	CAP. ELEC 4.7 UF 50V +/-20%	1	C603
25-BHB100-M1X	CAP. ELEC 10 UF 100V +/-20%	1	C420
25-BLA100-M1X	CAP. ELEC 10 UF 250V +/-20%	1	C408
26-AIC102-KBX	CAP. CER 1000 PF 500V +/-10% B	1	C401
26-AIC102-KBX	CAP. CER 1000 PF 500V +/-10% B	1	C404
26-AIC332-KBX	CAP. CER 3300 PF 500V +/-10% B	1	C407
26-AIC391-KBX	CAP. CER 390 PF 500V +/-10% B	1	C409
26-AIC391-KBX	CAP. CER 390 PF 500V +/-10% B	1	C412
26-EBP100-JCX	CAP. CER 10PF 50V +/-5% CH	1	C304
26-EBP102-KBX	CAP. CER 1000 PF 50V +/-10% B	1	C112
26-EBP102-KBX	CAP. CER 1000 PF 50V +/-10% B	1	C219
26-EBP102-KBX	CAP. CER 1000 PF 50V +/-10% B	1	C306
26-EBP103-ZFX	CAP. CER 0.01UF 50V +80/-20% F	1	C212
26-EBP103-ZFX	CAP. CER 0.01UF 50V +80/-20% F	1	C109
26-EBP103-ZFX	CAP. CER 0.01UF 50V +80/-20% F	1	C019
26-EBP103-ZFX	CAP. CER 0.01UF 50V +80/-20% F	1	C114
26-EBP103-ZFX	CAP. CER 0.01UF 50V +80/-20% F	1	C024
26-EBP103-ZFX	CAP. CER 0.01UF 50V +80/-20% F	1	C201
26-EBP103-ZFX	CAP. CER 0.01UF 50V +80/-20% F	1	C241
26-EBP103-ZFX	CAP. CER 0.01UF 50V +80/-20% F	1	C005
26-EBP103-ZFX	CAP. CER 0.01UF 50V +80/-20% F	1	C228
26-EBP103-ZFX	CAP. CER 0.01UF 50V +80/-20% F	1	C230
26-EBP103-ZFX	CAP. CER 0.01UF 50V +80/-20% F	1	C233
26-EBP103-ZFX	CAP. CER 0.01UF 50V +80/-20% F	1	C425
26-EBP103-ZFX	CAP. CER 0.01UF 50V +80/-20% F	1	C417
26-EBP103-ZFX	CAP. CER 0.01UF 50V +80/-20% F	1	C110
26-EBP103-ZFX	CAP. CER 0.01UF 50V +80/-20% F	1	C239

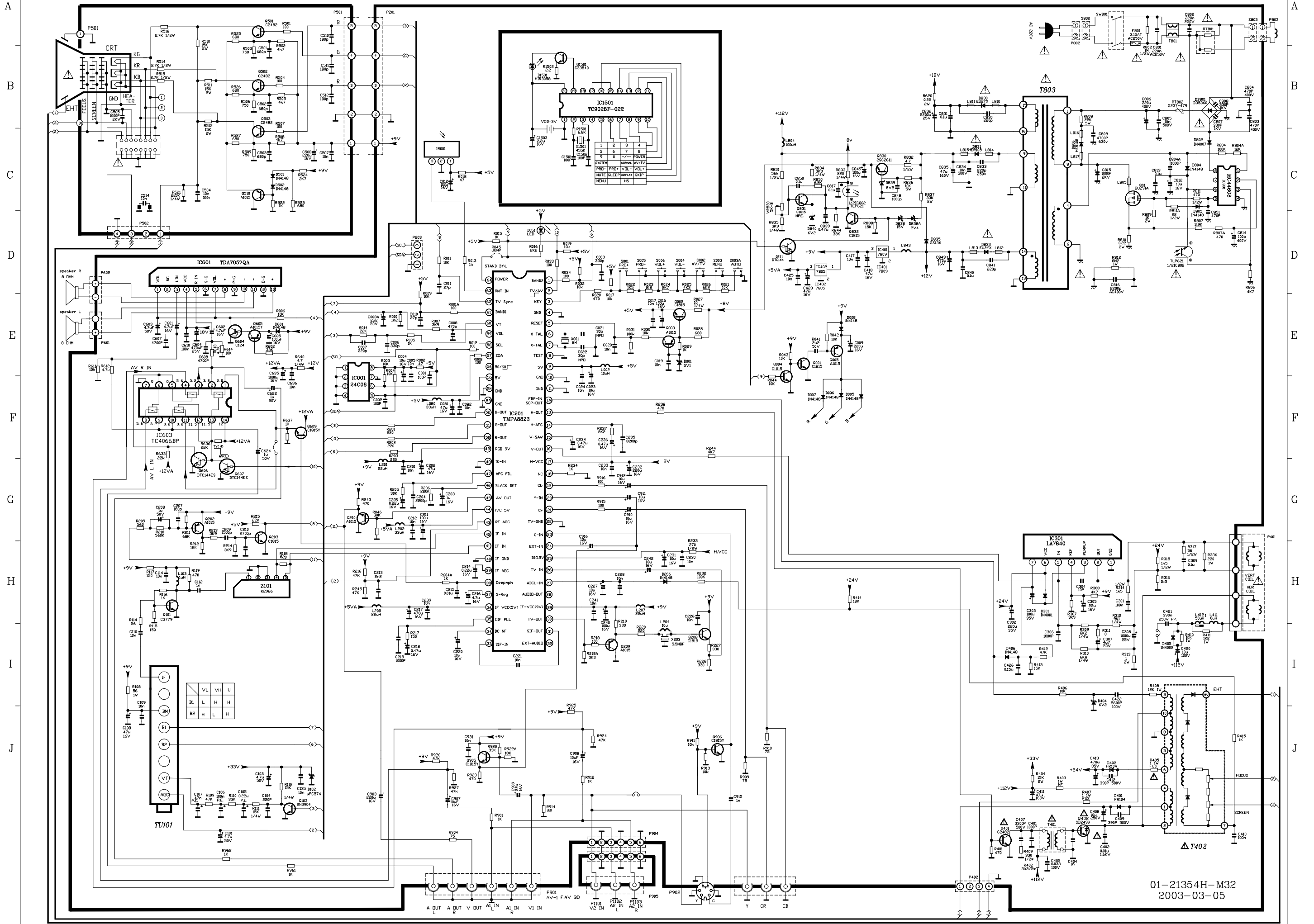
26-EBP103-ZFX	CAP. CER 0.01UF 50V +80/-20% F	1	C020
26-EBP103-ZFX	CAP. CER 0.01UF 50V +80/-20% F	1	C017
26-EBP103-ZFX	CAP. CER 0.01UF 50V +80/-20% F	1	C636
26-EBP103-ZFX	CAP. CER 0.01UF 50V +80/-20% F	1	C931
26-EBP103-ZFX	CAP. CER 0.01UF 50V +80/-20% F	1	C135
26-EBP103-ZFX	CAP. CER 0.01UF 50V +80/-20% F	1	C082
26-EBP103-ZFX	CAP. CER 0.01UF 50V +80/-20% F	1	C221
26-EBP181-JCX	CAP. CER 180PF 50V +/-5% CH	1	C207
26-EBP221-JCX	CAP. CER 220PF 50V +/-5% CH	1	C007
26-EBP221-JCX	CAP. CER 220PF 50V +/-5% CH	1	C104
26-EBP221-JCX	CAP. CER 220PF 50V +/-5% CH	1	C427
26-EBP270-JCX	CAP. CER 27PF 50V +/-5% CH	1	C010
26-EBP270-JCX	CAP. CER 27PF 50V +/-5% CH	1	C011
26-EBP331-JCX	CAP. CER 330PF 50V +/-5% CH	1	C006
26-EBP331-JCX	CAP. CER 330PF 50V +/-5% CH	1	C003
26-EBP390-JCX	CAP. CER 39PF 50V +/-5% CH	1	C021
26-EBP390-JCX	CAP. CER 39PF 50V +/-5% CH	1	C022
27-AGR274-JSX	CAP. M.PP 0.27UF 250V +/-5% S	1	C421
27-AGQ563-J0X	CAP. M.PP 0.056 UF 250V +/-5%	1	C410
27-ALR103-J0X	CAP. M.PP 0.01 UF 1.6KV +/-5%	1	C402
27-MBC104-J0X	CAP. M.P.E 0.1 UF 63V +/-5%	1	C106
27-MBC104-J0X	CAP. M.P.E 0.1 UF 63V +/-5%	1	C301
27-MBC104-J0X	CAP. M.P.E 0.1 UF 63V +/-5%	1	C309
27-MBC104-J0X	CAP. M.P.E 0.1 UF 63V +/-5%	1	C610
27-PBA224-J0X	CAP. P.E 0.22UF 63V +/-5%	1	C105
27-PBC103-J0X	CAP. P.E. 0.01UF 63V +/-5%	1	C215
27-PBC152-J0X	CAP. P.E 0.0015UF 63V +/-5%	1	C209
27-PBC222-J0X	CAP. P.E 0.0022UF 63V +/-5%	1	C213
27-PBC222-J0X	CAP. P.E 0.0022UF 63V +/-5%	1	C204
27-PBC272-J0X	CAP. P.E 0.0027UF 63V +/-5%	1	C210
27-PBC472-J0X	CAP. P.E 0.0047UF 63V +/-5%	1	C607
27-PBC472-J0X	CAP. P.E 0.0047UF 63V +/-5%	1	C608
27-PBC473-J0X	CAP. P.E 0.047 UF 63V +/-5%	1	C107
27-PBC562-J0X	CAP. P.E 0.0056UF 63V +/-5%	1	C422
27-PBC822-J0X	CAP. P.E 0.0082UF 63V +/-5%	1	C235
34-A109K0-1IX	COIL CHOKE 1 UH +/-10%	1	L103
34-R100J2-0EX	COIL PL - 10 UH +/-5%	1	L002
34-R120J2-0EX	COIL PL - 12 UH +/-5%	1	L204
34-R220J2-0EX	COIL PL - 22 UH +/-5%	1	L208
34-R220J2-0EX	COIL PL - 22 UH +/-5%	1	L201
34-R220J2-0EX	COIL PL - 22 UH +/-5%	1	L207
34-R330J2-0EX	COIL PL - 33 UH +/-5%	1	L080
36-HDR001-AX1	TRANSFOR HOR. DRIVE (MAGNETIC CORE)	1	T401
36-LIN500-XX1	COIL LINEARITY 50 UH	1	L412
36-WID960-XX1	COIL WIDTH 96 UH	1	L411
37-SC2502-84C0X	FLYBACK BSC25-0284C	1	T402
41-WJ0050-B00	WIRE BARE JUMPER 5MM	1	J411
41-WJ0050-B00	WIRE BARE JUMPER 5MM	1	J412
41-WJ0050-B00	WIRE BARE JUMPER 5MM	1	J420
41-WJ0050-B00	WIRE BARE JUMPER 5MM	1	L101
41-WJ0050-B00	WIRE BARE JUMPER 5MM	1	L202
41-WJ0055-B00	WIRE BARE JUMPER 5.5 MM	1	J008
41-WJ0060-B00	WIRE BARE JUMPER 6mm	1	C243

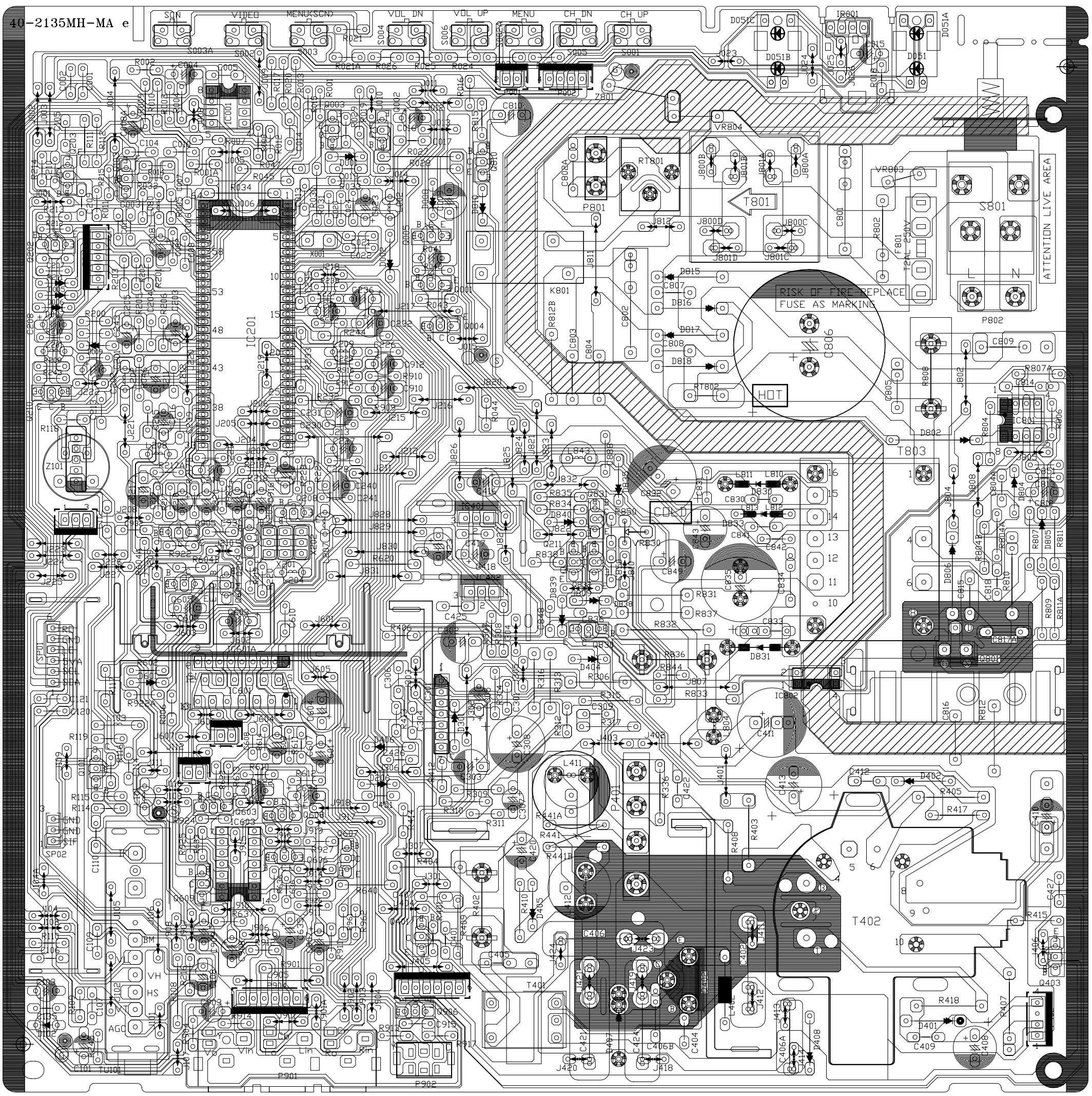
41-WJ0060-B00	WIRE BARE JUMPER 6mm	1	C915
41-WJ0060-B00	WIRE BARE JUMPER 6mm	1	J010
41-WJ0060-B00	WIRE BARE JUMPER 6mm	1	J101
41-WJ0060-B00	WIRE BARE JUMPER 6mm	1	J104A
41-WJ0060-B00	WIRE BARE JUMPER 6mm	1	J107
41-WJ0060-B00	WIRE BARE JUMPER 6mm	1	J109
41-WJ0060-B00	WIRE BARE JUMPER 6mm	1	J110
41-WJ0060-B00	WIRE BARE JUMPER 6mm	1	J210
41-WJ0060-B00	WIRE BARE JUMPER 6mm	1	J218
41-WJ0060-B00	WIRE BARE JUMPER 6mm	1	J222
41-WJ0060-B00	WIRE BARE JUMPER 6mm	1	J226
41-WJ0060-B00	WIRE BARE JUMPER 6mm	1	J406
41-WJ0060-B00	WIRE BARE JUMPER 6mm	1	J421
41-WJ0060-B00	WIRE BARE JUMPER 6mm	1	J605
41-WJ0060-B00	WIRE BARE JUMPER 6mm	1	J901A
41-WJ0060-B00	WIRE BARE JUMPER 6mm	1	J915
41-WJ0060-B00	WIRE BARE JUMPER 6mm	1	J916
41-WJ0060-B00	WIRE BARE JUMPER 6mm	1	J919
41-WJ0060-B00	WIRE BARE JUMPER 6mm	1	R008
41-WJ0060-B00	WIRE BARE JUMPER 6mm	1	R012
41-WJ0060-B00	WIRE BARE JUMPER 6mm	1	R200
41-WJ0060-B00	WIRE BARE JUMPER 6mm	1	R917
41-WJ0065-B00	WIRE BARE JUMPER 6.5MM	1	J011
41-WJ0065-B00	WIRE BARE JUMPER 6.5MM	1	J208
41-WJ0065-B00	WIRE BARE JUMPER 6.5MM	1	J305
41-WJ0065-B00	WIRE BARE JUMPER 6.5MM	1	J908
41-WJ0065-B00	WIRE BARE JUMPER 6.5MM	1	J913
41-WJ0065-B00	WIRE BARE JUMPER 6.5MM	1	J920
41-WJ0065-B00	WIRE BARE JUMPER 6.5MM	1	R311
41-WJ0065-B00	WIRE BARE JUMPER 6.5MM	1	J911
41-WJ0070-B00	WIRE BARE JUMPER 7MM	1	J104
41-WJ0070-B00	WIRE BARE JUMPER 7MM	1	J307
41-WJ0070-B00	WIRE BARE JUMPER 7MM	1	J906
41-WJ0070-B00	WIRE BARE JUMPER 7MM	1	J015
41-WJ0075-B00	WIRE BARE JUMPER 7.5MM	1	J001
41-WJ0075-B00	WIRE BARE JUMPER 7.5MM	1	J005
41-WJ0075-B00	WIRE BARE JUMPER 7.5MM	1	J013
41-WJ0075-B00	WIRE BARE JUMPER 7.5MM	1	J103
41-WJ0075-B00	WIRE BARE JUMPER 7.5MM	1	J205
41-WJ0075-B00	WIRE BARE JUMPER 7.5MM	1	J206
41-WJ0075-B00	WIRE BARE JUMPER 7.5MM	1	J207
41-WJ0075-B00	WIRE BARE JUMPER 7.5MM	1	J209
41-WJ0075-B00	WIRE BARE JUMPER 7.5MM	1	J303
41-WJ0075-B00	WIRE BARE JUMPER 7.5MM	1	J304
41-WJ0075-B00	WIRE BARE JUMPER 7.5MM	1	J602
41-WJ0075-B00	WIRE BARE JUMPER 7.5MM	1	J907
41-WJ0075-B00	WIRE BARE JUMPER 7.5MM	1	J914
41-WJ0075-B00	WIRE BARE JUMPER 7.5MM	1	J603
41-WJ0080-B00	WIRE BARE JUMPER 8 MM	1	J014
41-WJ0085-B00	WIRE BARE JUMPER 8.5MM	1	J219
41-WJ0085-B00	WIRE BARE JUMPER 8.5MM	1	J227
41-WJ0090-B00	WIRE BARE JUMPER 9MM	1	J225
41-WJ0090-B00	WIRE BARE JUMPER 9MM	1	J601

41-WJ0095-B00	WIRE BARE JUMPER 9.5MM	1	J404
41-WJ0100-B00	WIRE BARE JUMPER 10MM	1	J012
41-WJ0100-B00	WIRE BARE JUMPER 10MM	1	J221
41-WJ0100-B00	WIRE BARE JUMPER 10MM	1	J403
41-WJ0105-B00	WIRE BARE JUMPER 10.5MM	1	J212
41-WJ0105-B00	WIRE BARE JUMPER 10.5MM	1	J223
41-WJ0105-B00	WIRE BARE JUMPER 10.5MM	1	J224
41-WJ0110-B00	WIRE BARE JUMPER 11MM	1	J009
41-WJ0115-B00	WIRE BARE JUMPER 11.5MM	1	J604
41-WJ0115-B00	WIRE BARE JUMPER 11.5MM	1	J918
41-WJ0120-B00	WIRE BARE JUMPER 12MM	1	J401
41-WJ0120-B00	WIRE BARE JUMPER 12MM	1	J910
41-WJ0125-B00	WIRE BARE JUMPER 12.5MM	1	D408
41-WJ0125-B00	WIRE BARE JUMPER 12.5MM	1	J002
41-WJ0125-B00	WIRE BARE JUMPER 12.5MM	1	J003
41-WJ0125-B00	WIRE BARE JUMPER 12.5MM	1	J102
41-WJ0125-B00	WIRE BARE JUMPER 12.5MM	1	J105
41-WJ0125-B00	WIRE BARE JUMPER 12.5MM	1	J106
41-WJ0125-B00	WIRE BARE JUMPER 12.5MM	1	J216
41-WJ0125-B00	WIRE BARE JUMPER 12.5MM	1	J306
41-WJ0125-B00	WIRE BARE JUMPER 12.5MM	1	J402
41-WJ0125-B00	WIRE BARE JUMPER 12.5MM	1	R306
41-WJ0130-B00	WIRE BARE JUMPER 13MM	1	J204
41-WJ0130-B00	WIRE BARE JUMPER 13MM	1	J211
41-WJ0135-B00	WIRE BARE JUMPER 13.5MM	1	J006
41-WJ0135-B00	WIRE BARE JUMPER 13.5MM	1	J215
41-WJ0150-B00	WIRE BARE JUMPER 15MM	1	C406A
41-WJ0150-B00	WIRE BARE JUMPER 15MM	1	L402
41-WJ0150-B00	WIRE BARE JUMPER 15MM	1	J112
41-WJ0165-B00	WIRE BARE JUMPER 16.5MM	1	J220
41-WJ0165-B00	WIRE BARE JUMPER 16.5MM	1	J302
41-WJ0175-B00	WIRE BARE JUMPER 17.5MM	1	J004
41-WJ0180-B00	WIRE BARE JUMPER 18MM	1	R045
41-WJ0195-B00	WIRE BARE JUMPER 19.5MM	1	J217
41-WJ0200-B00	WIRE BARE JUMPER 20MM	1	J213
45-OSC8M0-0Y0	CRYSTAL 8.0MHZ	1	X001
45-SAW296-6M00G	SAW FILTER K2966M	1	Z101
45-TRA5M5-0Y0	CER TRAP TPS 5.5MHZ	1	X203
46-12866W-02X	PIN BASE *2 S11-02Y	1	
46-20598W-04X	PIN BASE *4 TJC1-4A	1	
46-33079W-02X	PIN BASE *2 TJC3-2A	1	
46-33079W-02X	PIN BASE *2 TJC3-2A	1	
46-33079W-03X	PIN BASE *3 TJC3-3A	1	P203
46-33079W-04X	PIN BASE *4 TJC3-4A	1	
46-33079W-04X	PIN BASE *4 TJC3-4A	1	
46-33079W-05X	PIN BASE *5 TJC3-5A	1	
46-33079W-06X	PIN BASE *6 TJC3-6A	1	
47-RCA035-XX0	RCA JACK AV-3.2-6W-K	1	P901
62-227680-0UA	BRACKET ABS-KINGFA 606 (UO)	1	
64-P30060-104	M/C SCREW 3 X 6 (ZINC)	2	
64-P30100-104	M/C SCREW P 3 X 10	2	
64-P30100-104	M/C SCREW P 3 X 10	2	
65-Z30050-23M	NUT M 3	2	

66-343730-0B0	HOLLOW RIVET 1.6X3.0XL3.2	2	
66-343730-0B0	HOLLOW RIVET 1.6X3.0XL3.2	2	
66-343730-0B0	HOLLOW RIVET 1.6X3.0XL3.2	3	
66-343730-0B0	HOLLOW RIVET 1.6X3.0XL3.2	4	
66-382330-0B7	RIVET 2.0X3.7X3.5	2	
67-H30752-3A0	HEAT SINK	2	
67-H34423-CA0	HEAT SINK	1	
70-271510-00A	SERVICE CARD	1	
71-270870-0A9	LABEL	2	
90-269080-ZU0	CLEAN COATING TC-131L 14KG/BARREL	0.0001	
66-343730-0B0	HOLLOW RIVET 1.6X3.0XL3.2	2	
41-WJ0050-B00	WIRE BARE JUMPER 5MM	1	L209
18-CB0102-JNX	RES. C.F. 1K OHM 1/6W +/-5%	1	C226
18-RG0228-JHX	RES. WIRE ROUND 0.22 OHM 2W +/-5%	1	R620
07-389V15-NX0	TUNER UVS1053-EW(HB 5V 38.9)	1	TU101
25-BJA470-M1X	CAP. ELEC 47 UF 160V +/-20%	1	C411
67-H10918-4M2	HEAT SINK	1	
67-H10918-4M2	HEAT SINK	1	
26-EBP471-JCX	CAP. CER 470PF 50V +/-5% CH	1	C008
25-BCB221-M1X	CAP. ELEC 220 UF 16V +/-20%	1	C231
41-WJ0065-B00	WIRE BARE JUMPER 6.5MM	1	J108
13-A19V04-TOP	IC A19V04-TO	1	IC201
25-GFB228-K1X	CAP. ELEC 0.22 UF 50V +/-10%	1	C205
25-GFB478-K1X	CAP. ELEC 0.47 UF 50V 10%CEC-K	1	C236
27-RCP333-J0X	CAP. PP 0.033 UF 100V +/-5%	1	C405
25-GFB478-K1X	CAP. ELEC 0.47 UF 50V 10%CEC-K	1	C234
10-CW574C-DJX	DIODE CW574CD	1	D102
25-DFB109-M1X	CAP. ELEC 1 UF 50V +/-20% NP	1	C916
40-2135MH-MAF	P.C.B. MAIN BD	1	
18-GJ0332-JUX	RES. CEMENT 3.3K 5W +/-5%	1	R402
18-CB0472-JNX	RES. C.F. 4.7k OHM 1/6W +/-5%	1	R003
18-CB0472-JNX	RES. C.F. 4.7k OHM 1/6W +/-5%	1	R004
13-L7805C-VAP	IC L7805CV 1.5A (REGULATOR)	1	IC402
26-AMK331-JZX	CAP. CER 330 pF 2KV +/-5% SL	1	C406B







RISK OF FIRE - REPLACE
FUSE AS MARKING

HOT

ATTENTION LIVE AREA

T 402

